

An aerial photograph of a suburban neighborhood. The image shows a mix of residential buildings, including several multi-story brick and stone townhouses or small apartment buildings, and numerous single-family houses with red-tiled roofs. The area is interspersed with green lawns, trees, and winding roads. A prominent road runs diagonally from the bottom left towards the middle right. The overall scene depicts a well-developed, planned community.

# Heron Gate Secondary Plan Community Open House

*Shaping the Vision for a Greater Community*

| What will we  
cover today?

What is a Secondary Plan?

Background and Context

Timeline for Secondary Plan

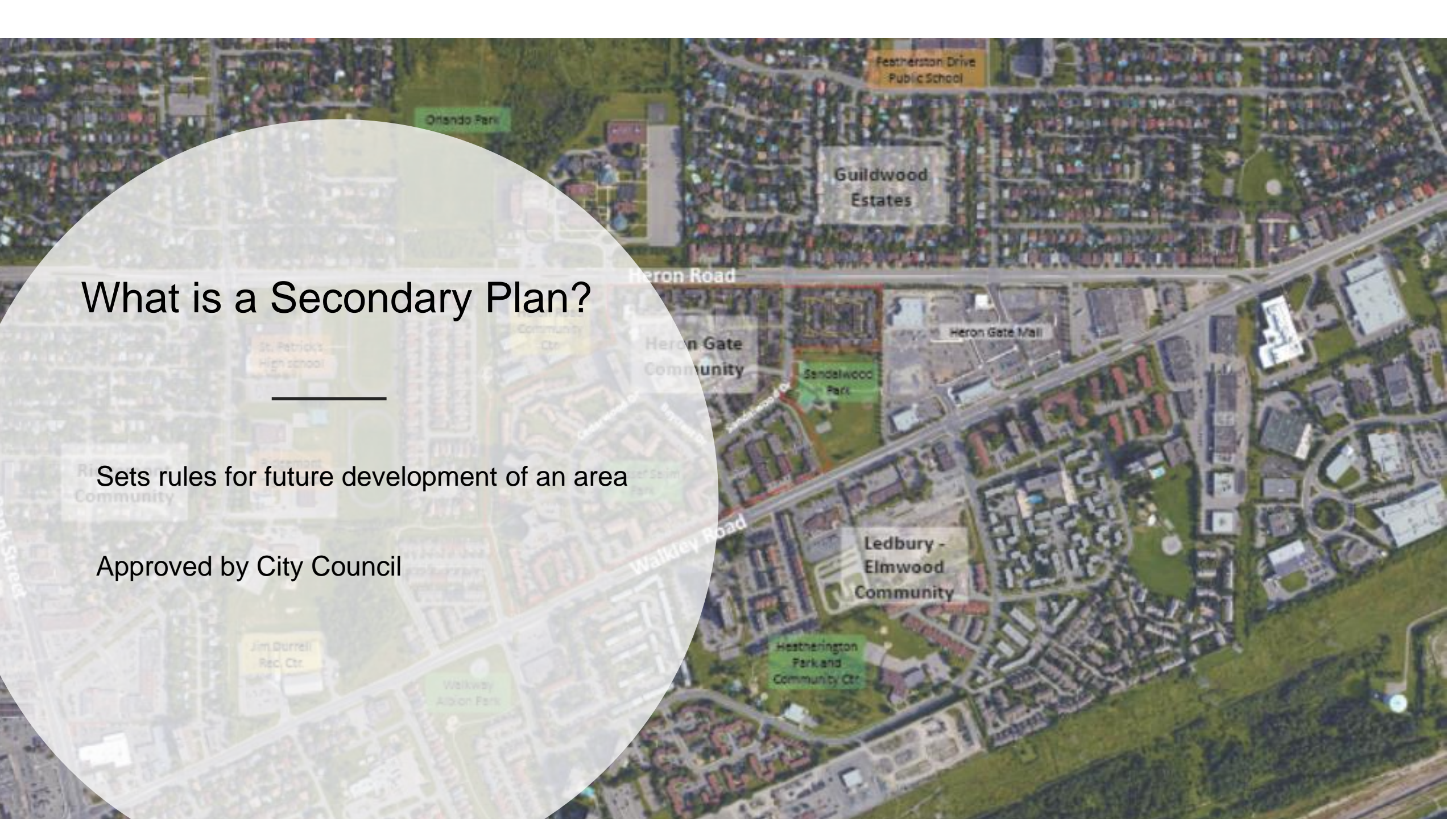
Opportunities for Participation

Who is Timbercreek?

Future of Heron Gate

Next Sessions



An aerial photograph of a suburban neighborhood. A large, semi-transparent white circle is overlaid on the left side of the image, containing text. The background map shows various features: Orlando Park (green label), Featherston Drive Public School (orange label), Guildwood Estates (grey label), Heron Road (white label), Heron Gate Community (grey label), Heron Gate Mall (white label), Sandelwood Park (green label), Walkley Road (white label), Ledbury - Elmwood Community (grey label), Heatherington Park and Community Ctr (green label), Jim Durrell Rec. Ctr. (yellow label), and Walkway Aldon Park (green label).


# What is a Secondary Plan?

---

Sets rules for future development of an area

Approved by City Council



An aerial photograph of a suburban neighborhood. A large, semi-transparent white circle is overlaid on the left side of the image, containing text. The background map shows various residential areas with labels: 'Featherston Drive Public School' in an orange box at the top; 'Orlando Park' in a green box; 'Guildwood Estates' in a grey box; 'Heron Road' in a grey box; 'Heron Gate Community' in a grey box; 'Heron Gate Mall' in a grey box; 'Sandalwood Park' in a green box; 'Ledbury - Elmwood Community' in a grey box; 'Hestherington Park and Community Ctr' in a green box; 'Heron Road Community Ctr' in a yellow box; 'St. Patrick's High School' in a yellow box; 'Ridgeway Community' in a grey box; 'Youssef Selim Park' in a green box; 'Jim Durrell Rec Ctr' in a yellow box; and 'Walkway Allston Park' in a green box. A red line outlines a specific area within the Heron Gate Community.

## What is in the Heron Gate Secondary Plan?

- Establishes locations for new parks, height limits buildings and other community needs
- The overarching goals are to create a community that is

- **SAFE**
- **HEALTHY**
- **VIBRANT**

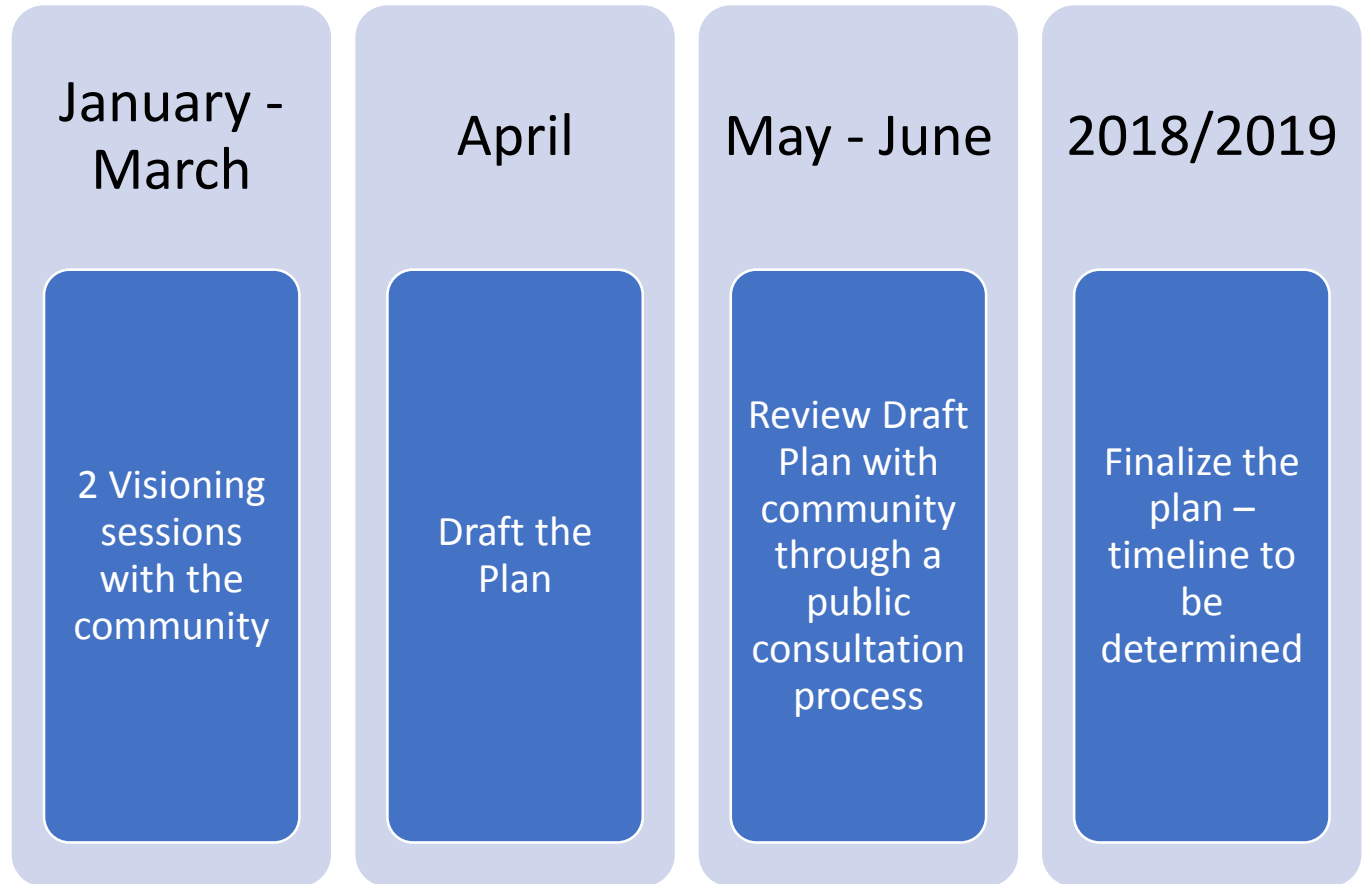
# What are our goals today?

Today is an information session to outline the process for engagement and community dialogue for the Heron Gate Secondary Plan.

We want  
your  
participation!

- We want to hear your thoughts, ideas, aspirations and insights.
- We want your participation and input to help shape the vision and priorities for the future of the Heron Gate community over the coming decades.

# Opportunities to participate





But first,  
who are we?

---

Timbercreek



Timbercreek



# Timbercreek

- Purchased Heron Gate site in 2012
- Invested \$40M in upgrades
- Investing \$120M in a new building
- Future investment is best coordinated starting with a Secondary Plan
- This is a team effort:
  - Timbercreek
  - Team of international experts in community design
  - City of Ottawa
  - And you – our community



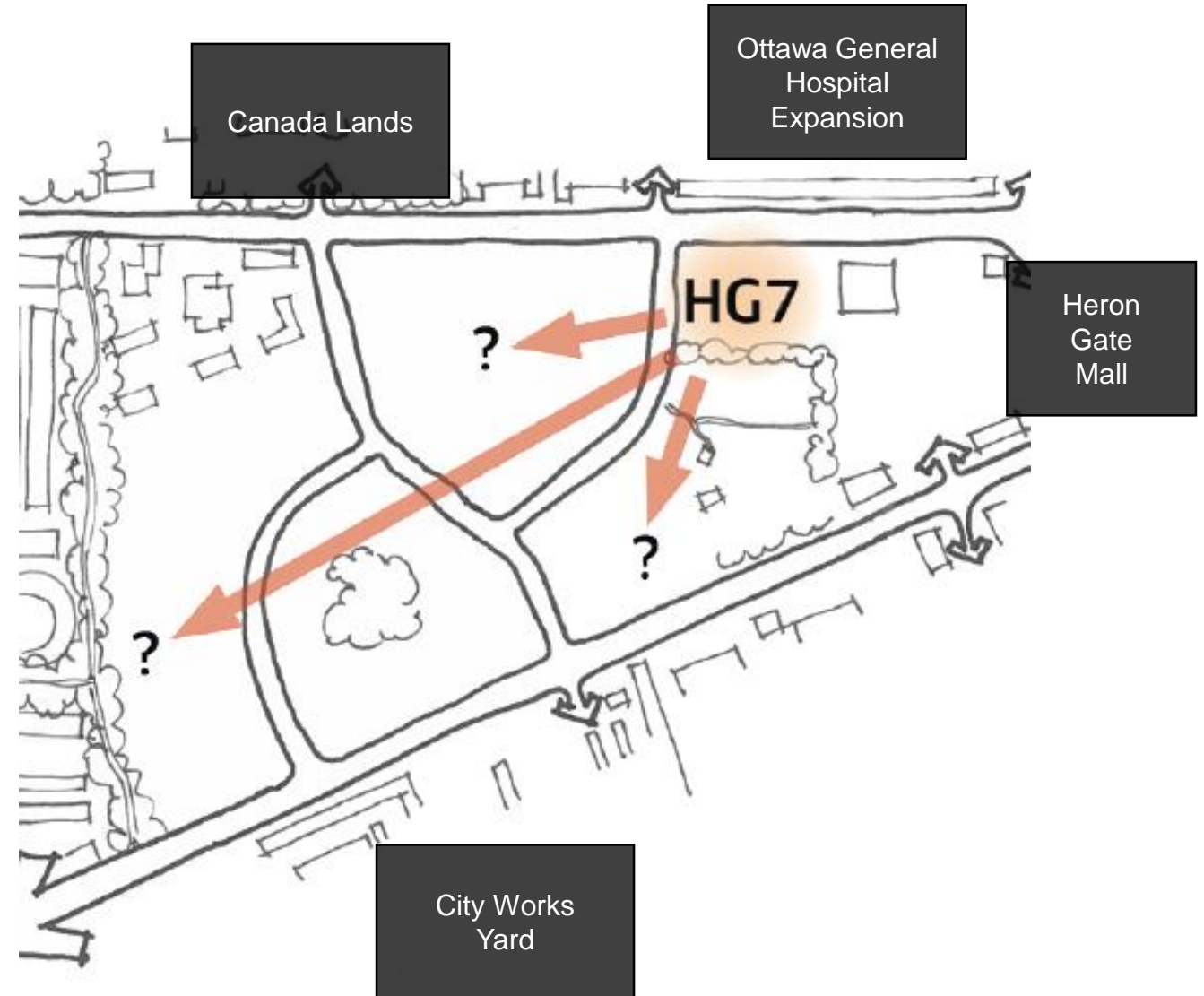
# Heron Gate: Now & Future

The community is improving:

- Heron Gate Mall - 2012
- Finn Court/Colbert Court - 2010
- Ledbury - 2008
- Heatherington/City Works Yard – Under Review
- Canada Lands

Heron Gate Renewal:

- Heron Gate phase 1 - 348 residences – 2017
- Future phases?



Heron Gate: 39.54 acres in Alta Vista

# Heron Gate in the future: HG7

- Liveable homes
- Safe and healthy communities





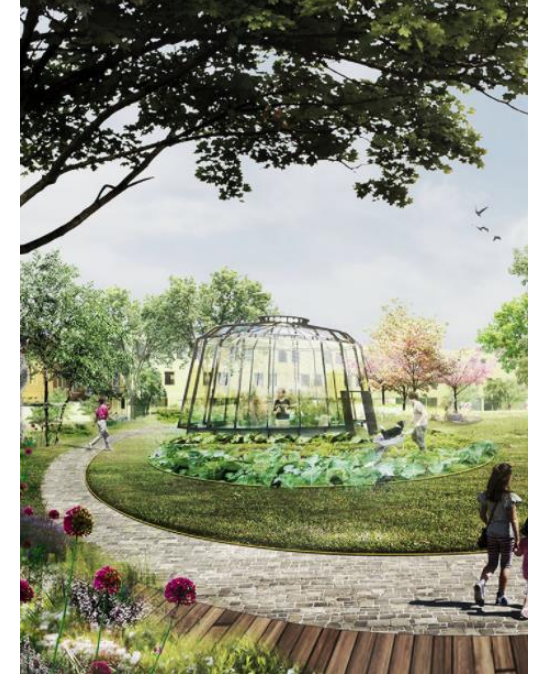
Community  
participation  
sessions

February 24<sup>th</sup> 9:30 a.m.

March (date TBC)

# Need community input & thoughts

- Parks
- Walkways
- Playgrounds
- Lighting
- Daycare
- Fitness
- Community Centre
- Bike paths





An aerial photograph of a university campus. The image shows a mix of architectural styles, including several tall, modern brick buildings with many windows, and older, lower-rise buildings with red-tiled roofs. Green spaces, trees, and parking lots are interspersed among the buildings. A road with a crosswalk is visible in the lower right. The overall scene is a dense, organized campus environment.

Thank You & Merci